



# EFI Colorproof eXpress



## Choose a Fast, Simple and Accurate Solution

In the proofing market, providing colour accurate, reliable printed documents quickly is the key to success. As a creative designer, agency, prepress house or if you work for a print buyer, you know that complicated proofing solutions or badly printed colour documents can impact your bottom line and negatively impact customer relationships. The new EFI Colorproof™ eXpress prevents these headaches by providing an entry-level “Proofing to Go” solution that provides high quality results. It’s perfect for small operations with limited budgets because Colorproof eXpress enables even your most inexperienced employees to provide validation prints and contract proofing out-of-the-box quickly, easily and effectively.

### Benefits

#### Easy to Set Up

Unlike other RIP solutions which have extensive installation and setup procedures, Colorproof eXpress has set up wizards to help you easily license, register and set up on your Macintosh® or Windows® operating system.

#### Easy to Use

EFI Colorproof eXpress enables definitions of colour and printing presets according to your requirements and even has pre-defined print modes for proofing, photo and black and white printing. It also comes with intuitive one-click spot colour handling, enabling you to effectively meet your customers’ high standards quickly.

#### Intuitive Graphic User Interface

Colorproof eXpress’ interface stands out with a user-friendly design. The solution features a menu display of the most commonly used tasks for every day use.

#### Focus on Standards

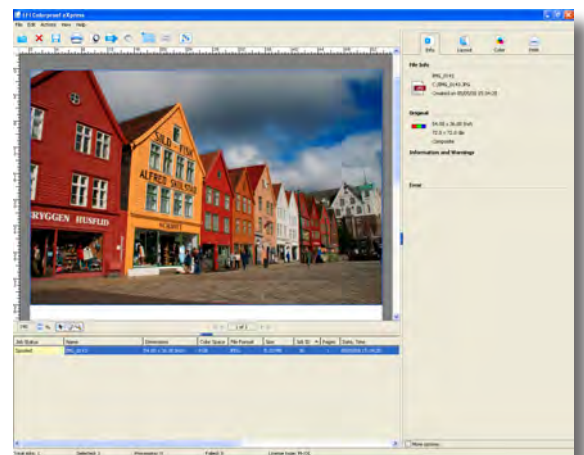
EFI Colorproof eXpress supports open market standards for easy integration into open standards based workflows. Its software RIP has an ICC compliant design that lets you provide validation printing and contract proofing easily on your inkjet, laser and LED printers.

#### Remote Job Processing and Printing

The Colorproof eXpress RIP provides remote job processing and printing capability for those who want to receive and print remote jobs quickly and accurately onsite, ideal for print buyers.

#### Scalable for a Greater Return on Investment

Like many of EFI’s integrated solutions, entry-level Colorproof eXpress provides a higher return on investment. As your business grows, simply cross grade to EFI’s high-end solution, EFI® Colorproof XF, which shares a similar user interface.





# EFI Colorproof eXpress

EFI's portfolio of integrated solutions increases productivity and improves your bottom line. Find out more at [www.efi.com](http://www.efi.com).

## EFI Colorproof eXpress v3.5

### Product Configurations\*

EFI Colorproof eXpress M:	Supports all printers up to 18" or A2
EFI Colorproof eXpress XL:	Supports all 24" printers
EFI Colorproof eXpress XXL:	Supports all printers bigger than 24"

*\*Support of one printer per product configuration.*

### Ease of use

Activation wizard for licensing and registering.	✓
Setup wizard for configuration of colour and printing settings.	✓
Save/load of application environment.	✓
Pre-defined print modes for Proofing, Photo and b/w print "Every-day work mode"	✓
Intuitive one click spot colour handling.	✓
Intuitive, easy to use graphic user interface based on XF concept.	✓
Online updater with reminder.	✓
Linearization compatible to XF products (*.apl).	✓
Backup and restore (as well after crossgrade to XF products!).	✓
Change of language in application.	✓
Supported languages: English, Spanish, French, Italian, Japanese, Korean, Chinese (simplified and traditional).	✓

### Integrated Technologies and Standards

ICC color management: including multicolor profile support (up to seven channels) and device link profile support.	✓
Cross-platform (Mac OS X / Windows incl. Vista.)	✓
Adobe CPSI 3017.	✓
Spot color libraries DIC, HKS, Pantone and Toyo.	✓
Ugra/Fogra media wedges v2.2 and v3.0.	✓
Focus on standards ICC, PDF/X, ISO 12647-7, SWOP and GRACoL.	✓
Supported file formats PS, EPS, DCS1, DCS2, PDF, TIFF, JPEG, JPEG2000, PSD and RPF.	✓
Processing and printing of remote jobs.	✓
Built in profile connector and ink assistant.	✓
Unicode support.	✓

### Productivity

Manual and automatic nesting.	✓
Contact sheet (for photo applications.)	✓
Speed setting (determines RIP resolution)	✓
Simultaneous job processing on multi processor PCs for non PDF and PS formats.	✓
Rip and Print on-the-fly.	✓

### Output

Support of inkjet, laser and LED printers.	✓
Tiff CMYK Export according to ISO printing conditions.	✓
Single print queue supporting one printer.	✓
Printing from Mac/Windows into application via Hotfolder, Virtual printer, AppleTalk printer.	✓
Printing via network (TCP/IP, Bonjour), USB or system printer (Windows only.)	✓
Supported printers (please contact your channel partner for more details): Agfa, Canon, Encad, EPSON, HP, Kodak, Mutoh, Mimaki, OKI, Roland, Seiko, Xerox	✓



Auto-Count, Bliss, Changing the Way the World Prints, ColorWise, Command WorkStation, DocBuilder, DocBuilder Pro, DocStream, EDOX, EFI, Fiery, the Fiery logo, Fiery Driven, the Fiery Driven logo, OneFlow, PrinterSite, PrintFlow, PrintMe, PrintSmith Site, Prograph, Proteus, RIP-While-Print, Setting the Standard in Digital Printing, Ultravu and VUTEk are registered trademarks of Electronics for Imaging, Inc. in the U.S. Patent and Trademark Office and/or certain other foreign jurisdictions. Bestcolor is a registered trademark of Electronics For Imaging GmbH in the U.S. Patent and Trademark Office. AutoCal, Balance, BioVu, BioWare, Build, ColorCal, Digital StoreFront, Estimate, Fiery Link, Fiery Prints, Fiery Spark, FreeForm, Hagen, Jetion, Logic, MicroPress, PhotoXposure, Printcafe, PrintSmith, PSI, PSI Flexo, Remoteproof, RIPChips, Scan, Screenproof, SendMe, Splash, Spot-On, UltraTex, UV Series 50, VisualCal, WebTools, the EFI logo, the Fiery Prints logo and Essential to Print are trademarks of Electronics for Imaging, Inc. Best, the Best logo, Colorproof, PhotoXposure, Remoteproof, and Screenproof are trademarks of Electronics For Imaging GmbH. All other terms and product names may be trademarks or registered trademarks of their respective owners, and are hereby acknowledged. © 2008 Electronics for Imaging

EFI Ltd, Stonebridge House, Padbury Oaks, Old Bath Road  
Longford, Middlesex UB7 0EW, United Kingdom  
tel +44 [0]1753 283676  
fax +44 [0]1753 283636  
[www.efi.com](http://www.efi.com)

EFI, Kaiserswerther Str. 115  
40880 Ratingen, Germany  
tel +49 [0]2102 7454 100  
fax +49 [0]2102 7454 111  
[www.efi.com](http://www.efi.com)